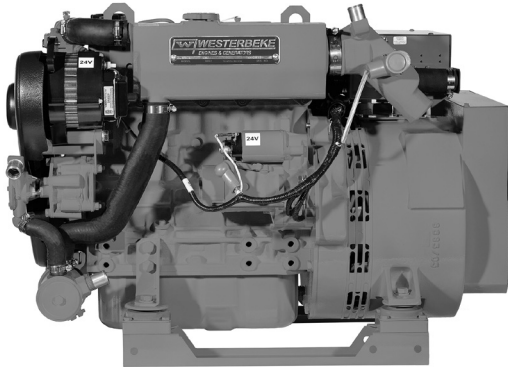




## Fully networked to NMEA 2000®



12.5/10.3 EDTA Marine Diesel Generator  
(Optional 24V shown.)

### The First Electronic Diesel Generators NMEA 2000® Certified

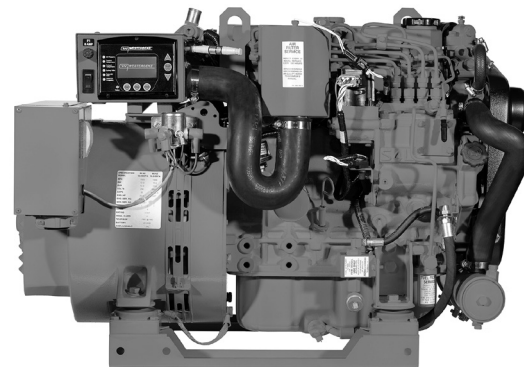
Westerbeke D-NET™ electronic generators are equipped with standard NMEA 2000® compliant databus communication. NMEA 2000® is a network for shipboard communications developed under National Marine Electronics Association (NMEA) standards. NMEA 2000® generators, combined with other certified components, allow boat builders and their customers to significantly reduce the cost, weight and space normally required to run cables throughout the vessel. All certified components freely communicate and are linked to just one NMEA 2000® cable using “T” connections that simplify networking.

### Information At Your Fingertips

All Westerbeke D-NET™ generators have available digital controls offering simplified and easy to understand information on operational status and, if necessary, system diagnostics. Westerbeke also features “at a glance” illuminated lights indicating proper operation. They monitor battery voltage, generator voltage, generator frequency, oil pressure, coolant and exhaust temperature. All this information may be viewed from a distance — all green lights indicate referenced systems are functioning properly. Further details are available on the screen display. The user may conveniently scroll for operational or diagnostic information without encountering “codes”. Westerbeke uses text so the user does not have to refer to a manual to decipher numeric information.

### Quiet, Slow-Speed Digital Operation

Operating at 1800-rpm with a newly designed, tuned air intake silencer and 3-cylinder engine, the 12.5 EDTA generator runs smooth and quiet. Augmenting this desired effect is the electronic governing that virtually eliminates “droop” when load is applied. Include the optional Sound Guard SST with high quality stainless steel base and frame with stylish powder coated aluminum panels and you have a generator as attractive as it is quiet.



12.5/10.3 EDTA Marine Diesel Generator  
(Optional 24V shown.)

### Standard Features

- NMEA 2000® compliant databus communication
- Digital display and diagnostics panel
- Electronic governing
- Safety shut-downs: overspeed, underspeed, low oil pressure, high exhaust and high coolant temperature
- AC circuit breaker
- 50 amp battery charging alternator
- Power take-off interface
- Self-bleeding fuel system
- Fresh water cooling and coolant recovery tank
- 45 degree water injected exhaust elbow
- Gear driven raw water pump
- Tuned air intake silencer
- Anti-vibration mounts – fail safe rubber type
- Lube oil drain hose and drip tray
- Oil fill – top and side
- Belt guard
- Operators' Manual and parts list
- 5-year limited warranty
- Meets CARB & U.S. EPA regulations

### Digital Display



### Generator Design

**DESIGN:** Brushless, four pole, revolving, power takeoff.  
**VOLTAGE REGULATION:** Standard +/- 5% no load to full load.  
**FREQUENCY REGULATION:** .5 Hz (.6%) no load to full load.  
**INSULATION:** Class "H" as defined by NEMA MG1-1.65.

**TEMPERATURE RISE:** Within NEMA MG1-22.40 definition when operating at full load.

**COOLING:** Cast centrifugal blower, direct connected.

**ELECTROMAGNETIC INTERFERENCE LEVEL:** Exceeds requirements for most marine radio-telephones and standard TVs.

| Model         | Electrical Characteristics |          |       |       |      | Ratings      |      | Engine |        |
|---------------|----------------------------|----------|-------|-------|------|--------------|------|--------|--------|
|               | Volts                      | Amps     | Hertz | Phase | Wire | Power Factor | KW   | RPM    | Start  |
| 12.5 EDTA-614 | 120/240                    | 104/52.0 | 60    | 1     | 4    | 1.0          | 12.5 | 1800   | Remote |
| 10.3 EDTA-514 | 230                        | 44.7     | 50    | 1     | 4    | 1.0          | 10.3 | 1500   | Remote |

Three phase units are available at these ratings.

### Specifications

|                            |                                     |            |
|----------------------------|-------------------------------------|------------|
| Number of cylinders        | 4 Cylinder vertical in-line         |            |
| Type                       | 4 cycle                             |            |
| Displacement               | 107.27 cu. in. (1.758 liter)        |            |
| Bore and stroke            | 3.07" x 3.62" (78.0 mm x 92.0 mm)   |            |
| Compression ratio          | 22:1                                |            |
| Rated rpm @ 60/50Hz        | 1800/1500                           |            |
| HP @ 1800 rpm              | 24.6 Standby / 22.7 Prime           |            |
| Maximum angle of operation | 15 continuous, 30 intermittent      |            |
| Exhaust elbow connection   | 2" OD (50.8mm)                      |            |
| Raw water connection       | 1" OD (25.4mm)                      |            |
| Dry weight                 | 570 lbs. (258.6 kg) approx.         |            |
| Combustion system          | Swirl type                          |            |
| Aspiration                 | Naturally aspirated                 |            |
| Lubrication system         | Forced lubrication by trochoid pump |            |
| Cooling system             | 8 quarts (7.6 liters)               |            |
| Starting aid               | 12 volt sheathed type glow plug     |            |
| Fuel consumption (approx.) | 1800 rpm                            | 1500 rpm   |
| 100% load GPH (LPH)        | 1.36 (5.15)                         | 1.03 (3.9) |
| 75% load GPH (LPH)         | 1.07 (4.05)                         | 0.80 (3.0) |
| 50% load GPH (LPH)         | 0.81 (3.07)                         | 0.62 (2.3) |
| 25% load GPH (LPH)         | 0.59 (2.23)                         | 0.45 (1.7) |
| Fuel injection pump        | Bosch type                          |            |
| Governor                   | Electronic                          |            |
| Injectors                  | Throttle type                       |            |
| Fuel Filter                | Primary and secondary               |            |
| Fuel transfer pump         | 12 volt electric type               |            |

|                               |  |
|-------------------------------|--|
| Fuel supply and return piping | 1/4" ID (6.35 mm) minimum<br>3/8" ID (9.53 mm) maximum |
| Lube oil filter               | Full flow, spin-on element                             |
| Lubricant capacity            | 5.5 quarts (5.2 liters)                                |
| Electrical system             | 12 volts DC, negative ground                           |
| Starting motor                | 12 volt, solenoid, actuated shift                      |
| Alternator                    | 50 amps (12 volts)                                     |
| Cranking amps                 | 270 @ 69 degrees F                                     |

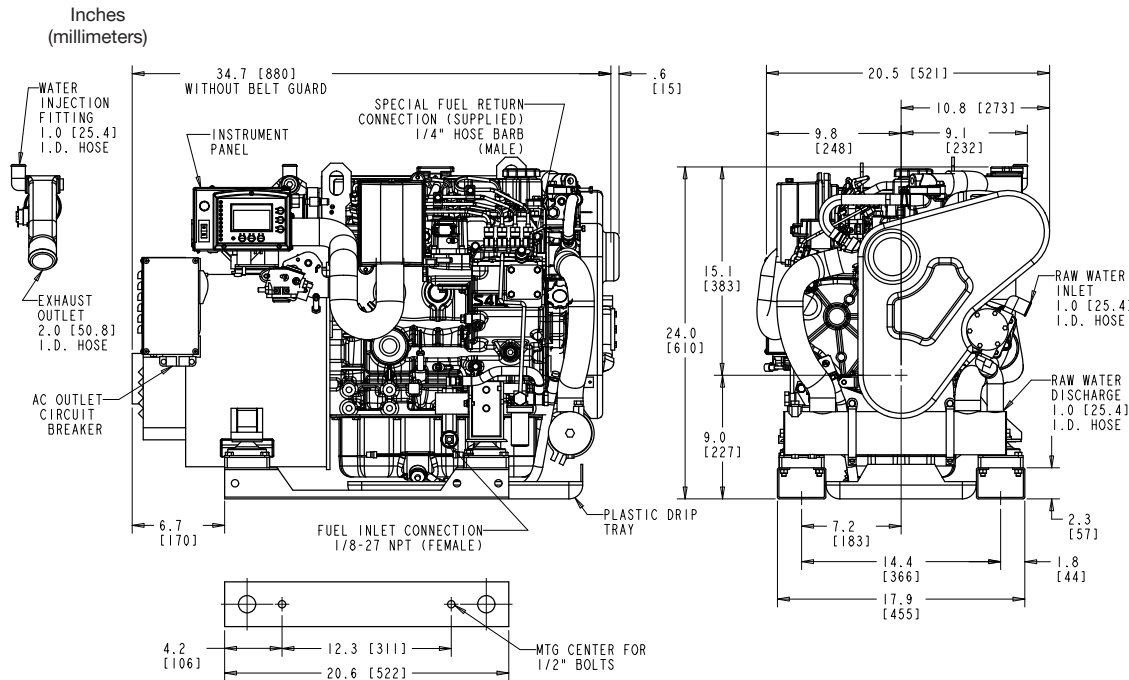
### Construction – Engine Components

|                  |  |
|------------------|--|
| Cylinder head    | Cast Iron  |
| Cylinder block   | Cast Iron  |
| Crankshaft       | Forged crankshaft, four main bearings                      |
| Valves           | Overhead rotating type                                     |
| Fuel System      | Self-bleeding  |
| Intake system    | Tuned intake silencer for maximum noise reduction          |
| Cooling system   | Fresh water-cooled with shell and tube type heat exchanger |
| Exhaust manifold | Cast aluminum, fresh water-cooled                          |

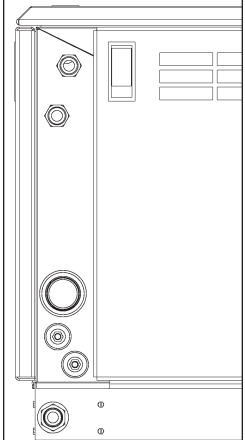
### Optional Equipment

- Remote digital display and start/stop
- Sound Guard SST
- Hydro-hush muffler and fittings; fuel water separator
- Anti-siphon valve with 1" inch stainless steel loop
- Ship-to-shore switch; power take-off adapter
- "A" on board spare parts kit
- "B" extended cruising spare parts kit
- Generator set available painted white upon request (standard red)

### Dimensions



Optional  
**Sound Guard SST**  
**PN 53463**  
*(for digital product only)*



**SST**  
 Length: 39.5" (1,003mm)  
 Width: 23.2" (589mm)  
 Height: 25.3" (643mm)  
 Weight: 94 lbs. (43kg)